



## SAUDI FELLOWSHIP TRAINING PROGRAM

### PAEDIATRIC RESPIRATORY MEDICINE

#### Final Written Examination

##### Examination Format:

The Saudi subspecialty fellowship and diplomas final written examination shall consist of one paper with 80-120 Single Best Answer MCQs. Up to 10% unscored items can be added for pretesting purposes.

##### Passing Score:

The passing score is 70%. However, if the percentage of candidates passing the examination before final approval is less than 70%, the passing score must be lowered by one mark at a time aiming at achieving 70% passing rate or 65% passing score whichever comes first. Under no circumstances can the passing score be reduced below 65%.

**Blueprint Outlines:**

No.	Sections	Percentage
1	Lung Growth, Development and Structure	5%
2	Cell Biology and Mechanism of Lung Inflammation, Injury, and Repair	5%
3	Lung Defence Mechanisms and Prevention of Disease	6%
4	Respiratory Physiology (control of breathing, mechanics, gas exchange and acid-base)	10%
5	Pulmonary Vascular Physiology and Disease	5%
6	Clinical Diseases	35%
7	Evaluation/Diagnosis (labs, radiology, PFT, procedures)	14%
8	Therapy (pharmacology, devices)	8%
9	Core Knowledge in Scholarly Activities (epidemiology, ethics, statistics, communication)	12%
<b>Total</b>		<b>100%</b>

**Note:**

- Blueprint distributions of the examination may differ up to +/-5 % in each category.
- Percentages and content are subject to change at any time. See the SCFHS website for the most up-to-date information.
- Research, Ethics, Professionalism, and Patient Safety are incorporated within the various domains.



**Suggested References:**

- Kendig and Chernick's Disorders of the Respiratory Tract in Children
- Taussing, Pediatric Respiratory Medicine
- Interpretation of Pulmonary Function Tests
- Pulmonary Physiology, (Lange Physiology)

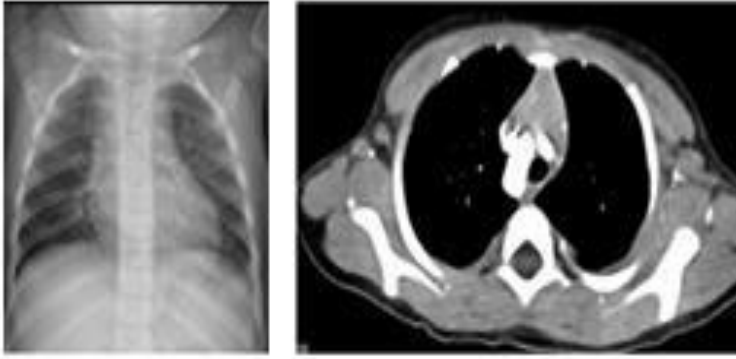
**Note:**

This list is intended for use as a study aid only. SCFHS does not intend the list to imply endorsement of these specific references, nor are the exam questions necessarily taken solely from these sources.

## Example Questions

### EXAMPLE OF K2 QUESTIONS

#### Question 1



The doctor is consulting on a 3-month-old patient with stridor. His growth parameters are satisfactory and the SpO<sub>2</sub> is normal breathing room air. Auscultation reveals low pitched inspiratory stridor with good breath sound intensity and no crackles or wheezing (see images).

Which of the following is the most likely explanation of this infant's stridor?

- A. Vascular ring
- B. Tracheomalacia
- C. Posterior mediastinal mass
- D. Infectious laryngotracheobronchitis

### EXAMPLE OF K1

#### Question 2

What is the inheritance pattern of cystic fibrosis?

- A. X-linked recessive
- B. X-linked dominant
- C. Autosomal recessive
- D. Autosomal dominant