



## SAUDI FELLOWSHIP TRAINING PROGRAM

### ADULT CARDIOLOGY

#### Promotion Examination

##### Written Examination Format:

- A written examination shall consist of one paper Paper 1: with not less than 100 MCQs with a single best answer (one correct answer out of four options).
- The examination shall contain type K2 questions (interpretation, analysis, reasoning and decision making) and type K1 questions (recall and comprehension).
- The examination shall include basic concepts and clinical topics relevant to the specialty.
- Clinical presentation questions include history, clinical finding and patient approach. Diagnosis and investigation questions; include the possible diagnosis and diagnostic methods. Management questions; including treatment and clinical management, either therapeutic or non-therapeutic, and complications of management. Materials and Instruments questions; including material properties, usage, and selection of instruments and equipment used. Health maintenance questions; include health promotion, disease prevention, risk factors assessment, and prognosis.

##### Passing Score for Promotion Exam:

The trainee's performance is assessed in each of the evaluation formulas according to the following scoring system:

Score	Less than 50%	50% – 59.4%	60% - 69.4%	More than 70%
Description	Clear Fail	Borderline Fail	Borderline Pass	Clear Pass

1. To upgrade the trainee from a training level to the next level, She/he must obtain at least a **Borderline Pass** in each evaluation form.
2. The program director may recommend to the local supervision committee to request the promotion of the trainee who did not meet the previous promotion requirement according to the following:
  - A. In case that the trainee gets a **borderline Fail** result in **one** of the evaluation forms, the remaining evaluation forms must be passed with **Clear Pass** in at least **one** of them.
  - B. In case that the trainee gets a **borderline Fail** result in **two** of the evaluation forms to a maximum, provided they do not fall under the same theme (Knowledge, Attitude, Skills). The remaining evaluation forms must be passed with **Clear Pass** in at least **two** of them.
  - C. The promotion must be approved in this case by the Scientific Council for the specialization.



## Blueprint Outlines

No.	F1 & F2	Section	Percentage
1		Hypertension	5%
2		Coronary Artery Disease	30%
3		Aortic Disease	5%
4		Cardiomyopathies/ Heart Failure/ Pregnancy	15%
5		Cardiac Arrhythmia	10%
6		Valvular Diseases	20%
7		Adult Congenital Heart Diseases ACHD	5%
8		Cardiac Pharmacology	5%
9		Pericardial/Systemic diseases	5%
Total			<b>100%</b>

### Note:

- Blueprint distributions of the examination may differ up to +/-5% in each category.
- Percentages and content are subject to change at any time. See the SCFHS website for the most up-to-date information.
- Research, Ethics, Professionalism and Patient Safety are incorporated within the various domains



### Suggested References:

1. Heart Disease- A textbook of cardiovascular medicine By Braunwald, Zipes and Libby
2. Cardiology By M. Crawford, J. DiMarco and W. Paulus
3. Textbook of Interventional Cardiology By Topol
4. Textbook of Clinical Echocardiography By C. Otto
5. Feigenbaum's Echocardiography
6. The Echo Manual By J. Oh
7. ASE's Comprehensive Echocardiography
8. Hemodynamic Rounds By Kern
9. The Art and Science of bedside diagnosis By Sapira
10. Interventional Cardiology By Singer
11. Mayo Clinic Cardiovascular Board Review By J. Murphy and M. Lloyd
12. Professionalism and Ethics, Handbook for Residents, Practical guide, Prof. James Ware, Dr. Abdulaziz Fahad Alkaabba, Dr. Ghaiath MA Hussein, Prof. Omar Hasan Kasule, SCFHS, Latest Edition.
13. Essentials of Patient Safety, SCHS, Latest Edition.

### Crash Courses:

- Outline of each course including suggested reading references given by the provider.

### Note:

This list is intended for use as a study aid only. SCFHS does not intend the list to imply endorsement of these specific references, nor are the exam questions necessarily taken solely from these sources.

### Example Questions

#### EXAMPLES OF K1:

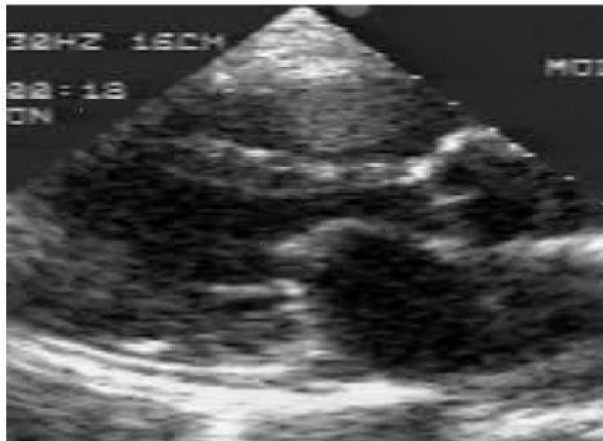
##### Question 1

Which of the following is not a side effect of ACE inhibitors?

- A. Cough
- B. Hypotension
- C. Hypokalemia
- D. Agranulocytosis

#### EXAMPLES OF K2:

##### Question 2



This 2-dimensional echocardiogram was most likely recorded in which of the following patients (see image)?

- A. A 54-year-old man with syncopal episodes when bending forward
- B. A 17-year-old girl with atypical chest pain and a midsystolic click
- C. A 42-year-old woman with palpitations, exertional dyspnea, and episodes of hemoptysis
- D. A previously healthy 68-year-old man with sudden onset of pulmonary edema and a new holosystolic murmur