

SAUDI BOARD RESIDENCY TRAINING PROGRAM

ADULT CRITICAL CARE

Promotion Examination

Written Examination Format:

- A written examination shall consist of one paper with not less than 100 MCQs with a single best answer (one correct answer out of four options).
- The examination shall contain type K2 questions (interpretation, analysis, reasoning and decision making) and type K1 questions (recall and comprehension).
- The examination shall include basic concepts and clinical topics relevant to the specialty.
- Clinical presentation questions include history, clinical finding and patient approach. Diagnosis and investigation questions; include the possible diagnosis and diagnostic methods. Management questions; including treatment and clinical management, either therapeutic or non-therapeutic, and complications of management. Materials and Instruments questions; including material properties, usage, and selection of instruments and equipment used. Health maintenance questions; include health promotion, disease prevention, risk factors assessment, and prognosis.

Passing Score for Promotion Exam:

The trainee's performance is assessed in each of the evaluation formulas according to the following scoring system:

Score	Less than 50%	50% – 59.4%	60% - 69.4%	More than 70%
Description	Clear Fail	Borderline Fail	Borderline Pass	Clear Pass

1. To upgrade the trainee from a training level to the next level, She/he must obtain at least a **Borderline Pass** in each evaluation form.
2. The program director may recommend to the local supervision committee to request the promotion of the trainee who did not meet the previous promotion requirement according to the following:
 - A. In case that the trainee gets a **borderline Fail** result in **one** of the evaluation forms, the remaining evaluation forms must be passed with **Clear Pass** in at least **one** of them.
 - B. In case that the trainee gets a **borderline Fail** result in **two** of the evaluation forms to a maximum, provided they do not fall under the same theme (Knowledge, Attitude, Skills). The remaining evaluation forms must be passed with **Clear Pass** in at least **two** of them.
 - C. The promotion must be approved in this case by the scientific council for the specialization.

Blueprint Outline

No.	R1, R2, R3 & R4	Section	Proportion%
1		Miscellaneous	10%
2		Renal, Endocrine, and Metabolic Disorders	15%
3		Cardiovascular Disorders and Hemodynamics	15%
4		Pulmonary Disease, airways and mechanical ventilation	15%
5		Infectious Disease	5%
6		Gastrointestinal Disorders	5%
7		Neurologic Disorders	15%
8		Hematologic and Oncologic Disorders	5%
9		Surgery, Trauma, Burn, Obstetric and Transplantation	10%
10		Pharmacology and Toxicology	5%
Total			100%

Note:

- Blueprint distributions of the examination may differ up to +/-5% in each category.
- Percentages and content are subject to change at any time. See the SCFHS website for the most up-to-date information.
- Research, Ethics, Professionalism and Patient Safety are incorporated within the various domains



Suggested References:

- Marino's The ICU Book, 4th Edition
- Irwin and Rippe's Intensive Care Medicine Seventh Edition

Crash Courses:

- Outline of each course including suggested reading references given by the provider.

Note:

This list is intended for use as a study aid only. SCFHS does not intend the list to imply endorsement of these specific references, nor are the exam questions necessarily taken solely from these sources.

Example Questions

EXAMPLE OF K1 QUESTIONS

Question 1

The pulmonary artery “wedge” or occlusion pressure (PAWP) is used in hemodynamic assessment to diagnosis and direct treatment of certain diseases.

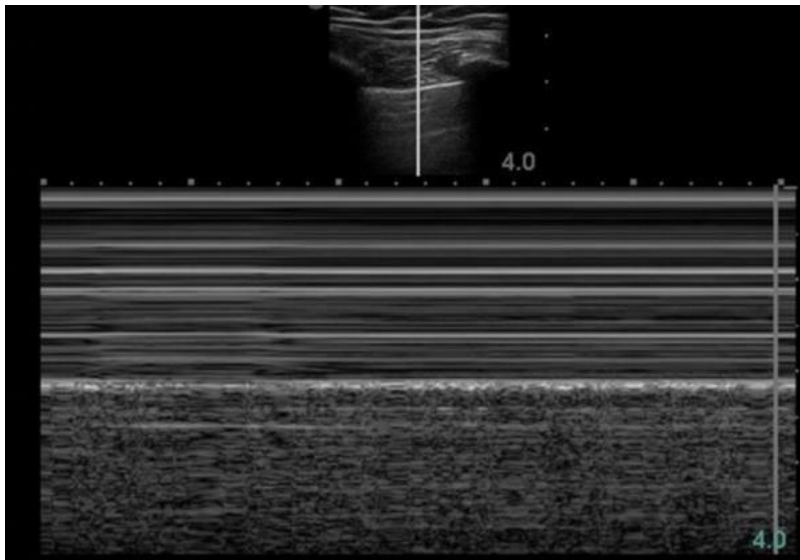
Which of the following does the PAWP represent a surrogate for?

- A. Afterload
- B. Oxygen Delivery
- C. The ejection fraction (EF)
- D. Left ventricular end-diastolic volume (LVEDV)

EXAMPLE OF K2 QUESTIONS

Question 1

After insertion of right Internal jugular central line to a 17 years old patient in the ICU a lung ultrasound was obtained on the right side (see image).



Which of the following is the most appropriate action?

- A. CXR confirmation
- B. Remove the central line
- C. No intervention is needed
- D. Insert a right sided chest tube