

## SAUDI FELLOWSHIP TRAINING PROGRAM

### NEONATAL PERINATAL MEDICINE

#### Promotion Examination

##### Written Examination Format:

- A written examination shall consist of one paper with not less than 100 MCQs with a single best answer (one correct answer out of four options).
- The examination shall contain type K2 questions (interpretation, analysis, reasoning and decision making) and type K1 questions (recall and comprehension).
- The examination shall include basic concepts and clinical topics relevant to the specialty.
- Clinical presentation questions include history, clinical finding and patient approach. Diagnosis and investigation questions; include the possible diagnosis and diagnostic methods. Management questions; including treatment and clinical management, either therapeutic or non-therapeutic, and complications of management. Materials and Instruments questions; including material properties, usage, and selection of instruments and equipment used. Health maintenance questions; include health promotion, disease prevention, risk factors assessment, and prognosis.

##### Passing Score for Promotion Exam:

The trainee's performance is assessed in each of the evaluation formulas according to the following scoring system:

Score	Less than 50%	50% – 59.4%	60% - 69.4%	More than 70%
Descriptio	Clear Fail	Borderline Fail	Borderline Pass	Clear Pass

1. To upgrade the trainee from a training level to the next level, She/he must obtain at least a Borderline Pass in each evaluation form.
2. The program director may recommend to the local supervision committee to request the promotion of the trainee who did not meet the previous promotion requirement according to the following:
  - A. In case that the trainee gets a borderline Fail result in one of the evaluation forms, the remaining evaluation forms must be passed with Clear Pass in at least one of them.
  - B. In case that the trainee gets a borderline Fail result in two of the evaluation forms to a maximum, provided they do not fall under the same theme (Knowledge, Attitude, Skills). The remaining evaluation forms must be passed with Clear Pass in at least two of them.
  - C. The promotion must be approved in this case by the Scientific Council for the specialization.

## Blueprint Outlines

No	F1 Section	Percentage
1	Respiratory	15%
2	Cardiovascular	9%
3	Maternal fatal medicine + Asphyxia	10%
4	Genetics	6%
5	Nutrition	8%
6	Endocrine	6%
7	Renal	5%
8	Gastroenterology	5%
9	Immunology and Infections	8%
10	Hematology	5%
11	Neurology and Neurodevelopment	10%
12	Statistic and Pharmacology	8%
13	Eye, Ear, Skin and Bilirubin	5%
<b>Total</b>		<b>100%</b>

### Note:

- Blueprint distributions of the examination may differ up to +/-5% in each category.
- Percentages and content are subject to change at any time. See the SCFHS website for the most up-to-date information.
- Research, Ethics, Professionalism and Patient Safety are incorporated within various domains.



**Suggested References:**

- Fanaroff and Martin's Neonatal-perinatal Medicine. Diseases of fetus and infant
- New review journal
- Essential of Neonatal Medicine
- Avery Neonatology

**Crash Courses:**

- Outline of each course including suggested reading references given by the provider.

**Note:**

This list is intended for use as a study aid only. SCFHS does not intend the list to imply endorsement of these specific references, nor are the exam questions necessarily taken solely from these sources.



### Example Questions

#### EXAMPLE OF K1 QUESTIONS

##### Question 1

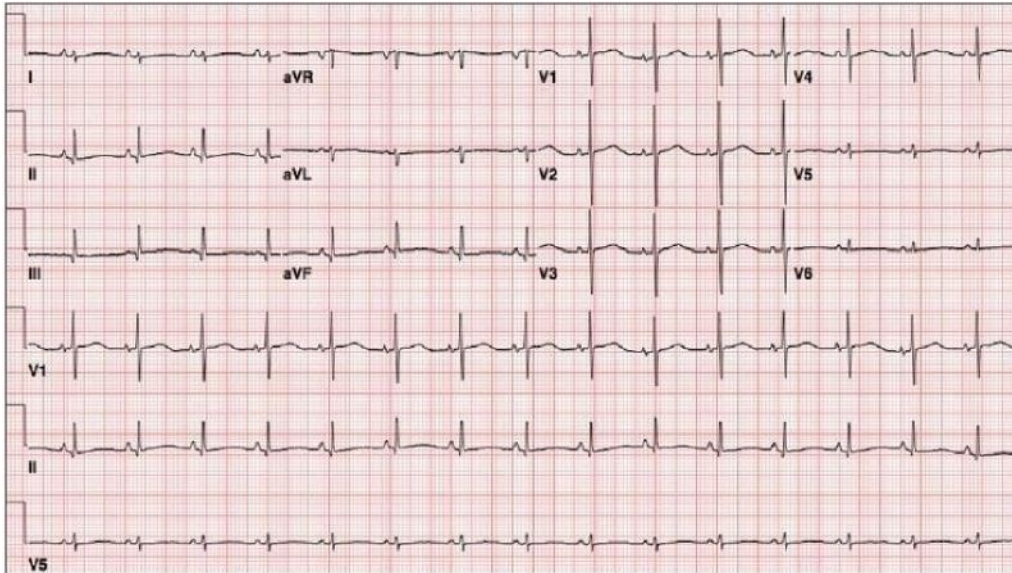
A 19-day-old term neonate infant presented with 5 days' history of several red lesions on both cheeks. The mother is a 26-year-old African mother with history of migraines. She took acetaminophen several times during her pregnancy.

Which of the following describes the cause of this rash?

- A. She has congenital viral infection
- B. A result if allergic to the soap
- C. The result of an inflammatory reaction to pityrosporum species
- D. A reaction to acetaminophen during the second and third trimester of pregnancy

## EXAMPLE OF K2 QUESTIONS

### Question 2



4-week-infant preterm 33 weeks had a smooth Neonatal Intensive Care Unit course until 3 days ago when he got klebsiella sepsis. He got intubated. Dopamine and dobutamine were started. EEG was obtained (see image and lab results).

Test	Result	Normal Values
urea	10	(7.5 - 14.4)MMOL/L
Cerate Nain	150	(65-85)MMOL/L
WBC	2.2	9.9-35.50x10(9)L
Plat	50	150-350x10(9)L

Which of the following is the most appropriate action?

- Start CPR
- Add another inotrope
- Administer adenosine by rapid bolus in central line
- Observe the infant for few minutes and try to feel the pulse again